

ILT

InLine Technologies

INTRODUCTION TO INLINE TECHNOLOGIES

InLine Technologies is a Well Recognised product supplier to Pharma, Biotech, Dairy and Food Beverage Industry.



DIARY



FOOD & BEVERAGE



COSMETICS



PHARMACEUTICAL



BIOTECH



CHEMICAL

INTRODUCTION TO INLINE TECHNOLOGIES

Our top quality products are widely accepted in hygienic industries like Biotech, Pharmaceutical, Food & Beverage, Vacuum & Semi-conductor /Electronics industries

We have Pan India operations for more than 17 year & service almost all the major companies in India. We provide end to end support in terms of product, services & delivery

EXCLUSIVE REPRESENTATION IN INDIA



ASME BPE, 3A, BS, DIN Standard Tubes, Fittings, Valves & Sanitary Application Pumps.



Process Control and Visual Control System: Lumiglas Sight Glass Fittings, Lumistar Luminaires and Camera Monitoring Setup.



Flexible Delivery hose suitable for cosmetic, pharmaceutical, Dairy, beverages and food products.



EPDM and PTFE/EPDM diaphragms which are compatible with the most diaphragm valves



- ❖ KINGLAI Founded in 1991, in Taiwan is one of the world fastest growing manufactures for components and fitting in sanitary piping systems & vacuum technology systems.
- ❖ ASME BPE Certified Stainless Tubes & Fittings Manufacturer.
- ❖ KINGLAI Products meet all standard in ASME BPE, 3A, BS, ISO and DIN. KingLai is 3A & ISO 9001-2000 and ASME Bio Processing Equipment (BPE) certified manufacturer.





KingLai Group's centrifugal pumps include KL-C Series Sanitary Centrifugal Pumps and KL-S Series High-efficiency Centrifugal Pumps. Through targeted selection, the two types of centrifugal pumps can be applied in almost all the scenarios requiring sanitary conveying.

- ❖ F-type seal ring
- ❖ Connection of pump spindle
- ❖ Stable mechanical seal
- ❖ Open-type impeller design
- ❖ Pump case - Made of high purity 316L
- ❖ stainless steel



PAPENMEIER

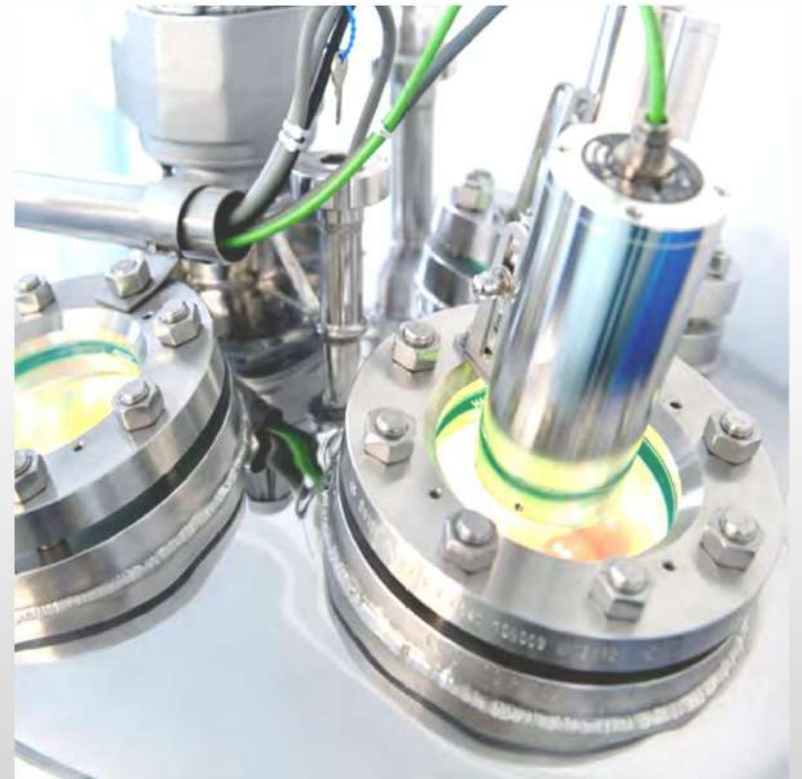
lumiglas®

SCHWERTE, GERMANY

Highly efficient Lumiglas components for optimally illuminating tanks, containers, agitators, separators, pipelines and other, generally closed, vessels in potentially explosive and other industrial facilities.

Product Range

- ❖ Sight glass fittings and accessories
- ❖ Sight glass discs
- ❖ Sight glass luminaires LED
- ❖ Vehicle luminaires
- ❖ Ex camera systems



PAPENMEIER

lumiglas[®]

SCHWERTE, GERMANY

- Camera with fixed lens K55-HD-Ex/K55-4K-Ex
- With these standard cameras, the lens is permanently adjusted to the object to be observed during installation (outdoor area/outdoor plant or process parts such as boilers or agitators).
- The VISULEX camera system is ideal for the inspection, documentation and remote monitoring of process operations in potentially explosive and aseptic environments.



DIFLON

T E C H N O L O G Y

MILANO, ITALY

- ❖ Flexible hoses with internal lining in PTFE, PFA, UPE and other corrosion-resistant materials, suitable for chemical, food and pharmaceutical products.
- ❖ External layers in EPDM, and stainless steel.
- ❖ Silicone hoses for the pharmaceutical industry.
- ❖ The Diflon sales program includes the supply of pipes of the desired type, connected and cut to size.
- ❖ Fittings in AISI 316L, AISI 316L/PFA.

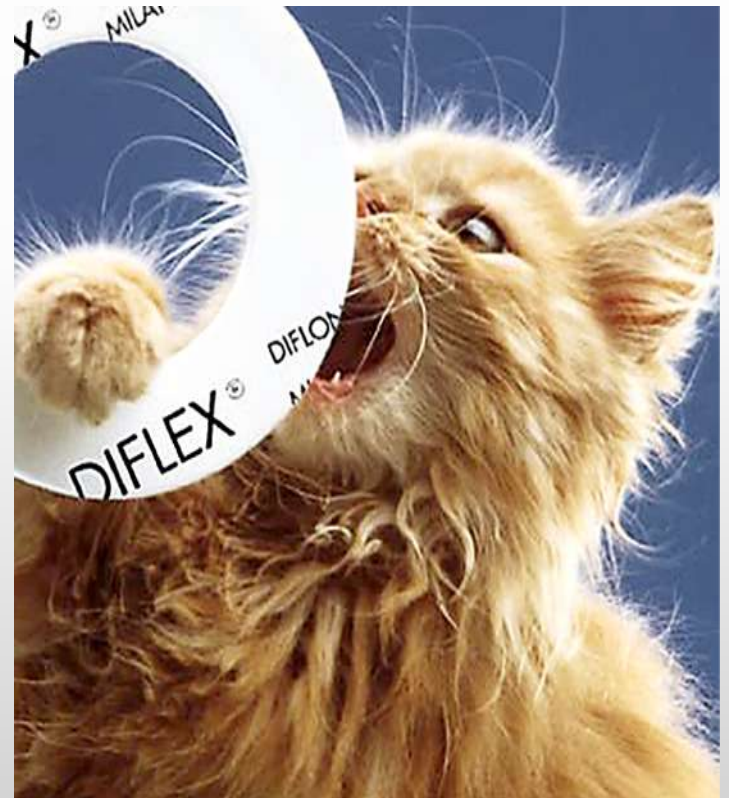


DIFLON

T E C H N O L O G Y

MILANO, ITALY

- ❖ DIFLEX is resistant to almost all chemical products, pH 0 - 14, strong acids and alkalis, solvents, chlorine, catalysts, liquefied gases, steam, diathermic oils, food, pharmaceutical, petrochemical products, etc.
- ❖ Recommended for use in the chemical, petrochemical, food, pharmaceutical, cryogenic industries, etc.
- ❖ DIFLEX resists high compressions, remaining elastic.
- ❖ DIFLEX does not absorb humidity.
- ❖ DIFLEX remains non-adhesive at both high and low temperatures.
- ❖ DIFLEX resists atmospheric agents and does not undergo aging even in a marine environment.
- ❖ DIFLEX is completely antacid.
- ❖ DIFLEX is non-toxic.





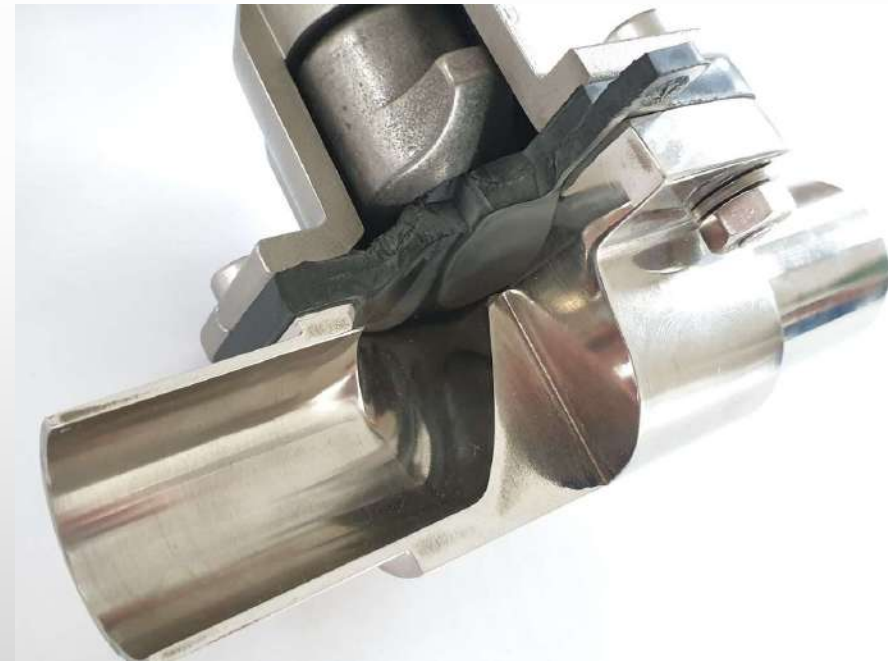
Seseca Inc. was founded in 2018 in the City of Zug / Switzerland

Beginning of November 2022 we moved from Zug to the Town of Pratval where our spare parts are stored under the perfect conditions in our warehouse located in the heart of the Swiss Alps.

We are specialized in providing top quality consumables and spare parts for pharmaceutical/biotech facilities and we also provide a wide range of engineering assistance services for your projects or maintenance purposes.

We produce EPDM and PTFE/EPDM diaphragms which are compatible with the most diaphragm valves

Our Head of Products has over 24 years experience in the pharmaceutical field and has worked globally with many big players in the pharmaceutical and biotech manufacturing field.



OUR SERVICES

SERVICES:

InLine Technologies will provide the advantage of swift & prompt services right enduser location with technically trained personnel.

LOCAL INVENTORY:

InLine Technologies maintains a substantial local inventory base in India with almost the complete product range of all our partners.

LOCAL TECHNICAL SUPPORT:

InLine Technologies has a pan India presence, and we can provide assistance on every aspect of our product line locally through our local product specialists.

LOCAL COMMERCIAL & LOGISTICS SUPPORT:

When time of delivery becomes critical, InLine Technologies' constantly updated local inventory helps us provide instant deliveries to customer at affordable price points as per customer requirements.

OUR TEAM

We have a team of dedicated professionals which constitutes of

- Sales & Product Specialist – 06 Nos
- Service Support Specialist – 03 Nos
- Back Office Support - 02 Nos

OUR PRESENCE



OUR CLIENTS



And Many More

THANK YOU